

Clydebank Tote Handle Hacks and Alternative Closures

You can find the Clydebank Tote pattern here,
<https://sewsweetness.com/products/clydebank-tote>

Hack #1

***This is for handles that were cut 2" to 3" up the bag.**

Make the Handles

1. Cut 2 pieces of fabric and Shape Flex the length you like a handle to be x 4" wide. Fuse the Shape Flex according to the manufacturer's instructions. I cut my handles 22" long.
2. Fold the handles in half along the long edge and press. Open up and fold the raw edges to the center and press. Then refold everything and press again. You will have created a piece of double fold bias tape.
3. Topstitch the handles 1/8" along both long edges on both handles.

Attach the Handles

4. Sew the bag together completely, but don't do the topstitching yet.

*When sewing the handles at the top of the bag, you'll need them to be 1-1/8" when finished. To do this, you'll gradually increase the seam allowance as you're going up the handle and then decrease as you go back down. You can see in my picture, when it will look like when you're done sewing (but the top short edge won't be sewn). You won't sew across the top edge, you need this to be open.

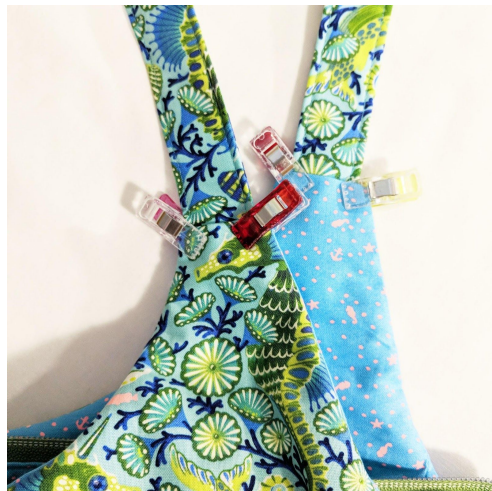


Clydebank Tote Handle Hacks and Alternative Closures by Michelle Graham
#clydebanktotehandlehack #clydebanktotealternativeclosurehack

5. Turn the raw edges of the handles under and press.



6. Insert the raw edge of the completed handles into the handle on the top of the bag by at least 1/2" and pin in place.



7. Topstitch the bag, all the way around. When you reach the strap, you'll sew across to hold the handle in place.



Hack #2

***This is for handles that were cut 2" to 3" up the bag.**

Supplies:

- Rivets or Chicago Screws are optional.

Make the Handles

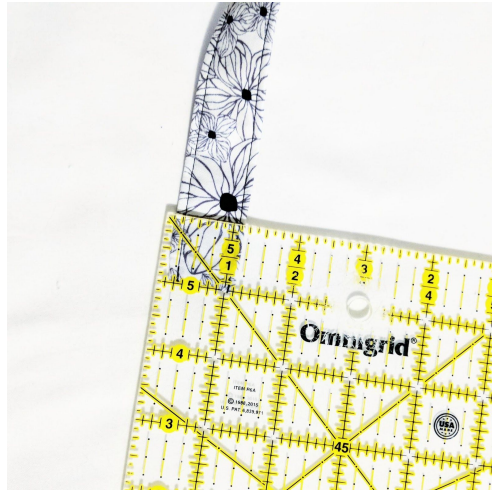
1. Cut 2 pieces of fabric and Shape Flex the length you like a handle to be x 4" wide. Fuse the Shape Flex according to the manufacturer's instructions. I cut my handles 22" long.
2. Press the short edges of the handles in by 1/2" and press. Fold the handles in half along the long edge and press. Open up and fold the raw edges to the center and press. Then refold everything and press again. You will have created a piece of double fold bias tape.
3. Topstitch the handles 1/8" along the long and short edges on both handles.

Attach the Handles

4. Sew the bag together completely, including the topstitching.

*When sewing the handles at the top of the bag, you'll need them to be 1" when finished. To do this, you'll gradually increase the seam allowance as you're going up the handle and then decrease as you go back down. You can see in my picture, when it will look like when you're done sewing.

5. Make a mark on your completed handle that is 1" up from both short ends on both straps. You can change this measurement, if you'd like to.



6. Pin the handle on the bag, lining up the line you drew in Step 5 with the top of the handle on the bag



7. You can either sew the handle in place or add rivets or Chicago Screws.



Handle Hack #3

***This is for handles that were cut 2” to 3” up the bag.**

Supplies:

- Four 1” rectangle rings
- Rivets or Chicago Screws are optional.

Make the Handles

1. Cut 2 pieces of fabric and Shape Flex the length you like a handle to be x 4” wide. Fuse the Shape Flex according to the manufacturer’s instructions. I cut my handles 22” long.
2. Press the short edges of the handles in by 1/2” and press. Fold the handles in half along the long edge and press. Open up and fold the raw edges to the center and press. Then refold everything and press again. You will have created a piece of double fold bias tape.
3. Topstitch the handles 1/8” along the long and short edges on both handles.

Attach the Handles

4. Sew the bag together completely, including the topstitching.
- *When sewing the handles at the top of the bag, you’ll need them to be 1” when finished. To do this, you’ll gradually increase the seam allowance as you’re going up the handle and then decrease as you go back down. You can see in my picture, when it will look like when you’re done sewing.

[Clydebank Tote Handle Hacks and Alternative Closures by Michelle Graham](#)
[#clydebanktotehandlehack](#) [#clydebanktotealternativeclosurehack](#)

5. Measure and make a mark that is 1" down on the handle at the top of the bag. Slide a rectangle ring to this mark. Pin in place.



6. You can either sew the handle in place or add rivets or Chicago Screws.



7. Make a mark on your completed handle that is 1" up from both short ends on both straps. You can change this measurement, if you'd like to.

8. Slide the rectangle ring, already attached to your bag, to this 1" mark. Pin in place.

9. You can either sew the handle in place or add rivets or Chicago Screws.



Handle Hack #3

***This is for handles that were cut 2" to 3" up the bag.**

Supplies:

- Four 1" metal buckles
- Eight 1/4" grommets
- Rivets or Chicago Screws are optional.

Make the Handles

1. Cut 2 pieces of fabric and Shape Flex the length you like a handle to be x 4" wide. Fuse the Shape Flex according to the manufacturer's instructions. I cut my handles 22" long.
2. Press the short edges of the handles in by 1/2" and press. Fold the handles in half along the long edge and press. Open up and fold the raw edges to the center and press. Then refold everything and press again. You will have created a piece of double fold bias tape.
3. Topstitch the handles 1/8" along the long and short edges on both handles.

Attach the Handles

4. Sew the bag together completely, including the topstitching.

*When sewing the handles at the top of the bag, you'll need them to be 1" when finished. To do this, you'll gradually increase the seam allowance as you're going up the handle and then decrease as you go back down. You can see in my picture, when it will look like when you're done sewing.

5. Measure and make a mark that is 1" down and centered on the handle at the top of the bag. Repeat this on all handles.

[Clydebank Tote Handle Hacks and Alternative Closures by Michelle Graham](#)
[#clydebanktotehandlehack](#) [#clydebanktotealternativeclosurehack](#)

6. Make a hole at these marks you made in Step 5 and install the grommet.



7. Slide the metal buckle onto the handle, ensure the middle bar goes through the grommet. Fold the strap down and pin in place.



[Clydebank Tote Handle Hacks and Alternative Closures by Michelle Graham](#)
[#clydebanktotehandlehack](#) [#clydebanktotealternativeclosurehack](#)

8. Stitch the handle down, as close the hardware as you can. I stitched over this a couple of times, for extra security.



*This stitching won't be seen, so don't worry if it's not perfect.

9. Make a mark on your completed handle that is 1" up from both short ends on both straps. You can change this measurement, if you'd like to.

10. Make a hole at these marks you made in Step 9 and install the grommet.



11. Slide the handle through the metal buckle, ensuring the middle bar goes through the grommet. Pin in place.

*You want to make sure this is pulled tight when you pin it. To do this, hold the bag by the handles and then pin. Make sure the handles are centered too.

[Clydebank Tote Handle Hacks and Alternative Closures](#) by Michelle Graham
[#clydebanktotehandlehack](#) [#clydebanktotealternativeclosurehack](#)

2. You can either sew the handle in place or add rivet or Chicago Screws.



Handle Hack #4

***For this hack, you will need to cut the handles off the bag completely. Cut straight across with the top of the Side panel and Main Panel meet (the little 1/4" cut out). I have no Step photo for this hack.**

Supplies:

- Four 1" Strap Anchors
- Rivets or Chicago Screws are optional.

Make the Handles

1. Cut 2 pieces of fabric and Shape Flex the length you like a handle to be x 4" wide. Fuse the Shape Flex according to the manufacturer's instructions. I cut my handles 22" long.
2. Press the short edges of the handles in by 1/2" and press. Fold the handles in half along the long edge and press. Open up and fold the raw edges to the center and press. Then refold everything and press again. You will have created a piece of double fold bias tape.
3. Topstitch the handles 1/8" along the long and short edges on both handles.

Attach the Handles

4. Sew the bag together completely, Do not do the topstitching.
5. Make a mark using the Strap Anchor Washer, where you would like the placement of the Strap Anchor to be. Repeat this on all 4 sides.
6. Install the Strap Anchors. Use a piece of firm interfacing behind them, for extra security.
7. Topstitch the bag.

[Clydebank Tote Handle Hacks and Alternative Closures by Michelle Graham](#)
[#clydebanktotehandlehack](#) [#clydebanktotealternativeclosurehack](#)

8. Make a mark on your completed handle that is 1" up from both short ends on both straps. You can change this measurement, if you'd like to.
9. Slide the Strap Anchor, already attached to your bag, to this 1" mark. Pin in place.
10. You can either sew the handle in place or add rivets or Chicago Screws.

Alternate Way to Make Handles

*This is a hack I had found back when I started sewing and totally forgot about it until another member posted about it, quite a while back. It helps give a cleaner look to the ends of your handles.

1. After you cut, fold and press your handles, open them up so the wrong sides are touching. Pin in place.



2. Make a mark that is 1" over from the folded edge.
3. Sew the top short edge using 1/4" seam allowance, up to the mark you made in Step Two.



[Clydebank Tote Handle Hacks and Alternative Closures by Michelle Graham](#)
[#clydebanktotehandlehack](#) [#clydebanktotealternativeclosurehack](#)

4. Cut the Handle on the edge you didn't sew, on an angle. Trim the other side on an angle, careful not to cut the stitches.



5. Turn the handle right sides out, push out the corner, folding everything back up and press. Pin in place.



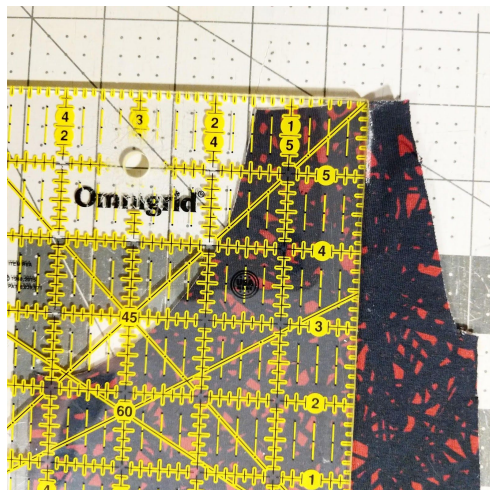
6. Repeat Steps 1-5 for the other side of the handle and for both sides of the second handle as well.

7. Topstitch the handles 1/8" along the long and short edges on both handles.



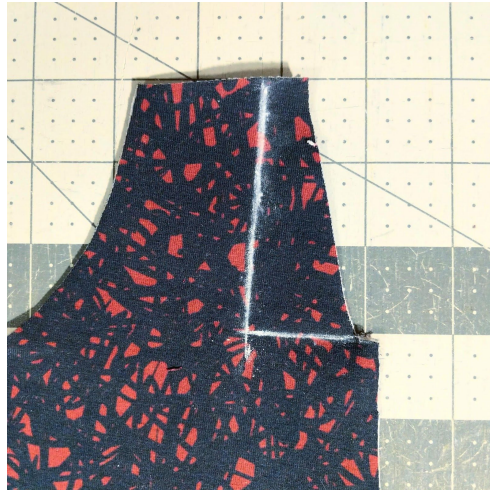
Alternate Way to Get the Handles on Your Bag to Be 1"

1. Measure and make a mark that is 1-1/2" over from the inside edge of the handle at the top of the bag.

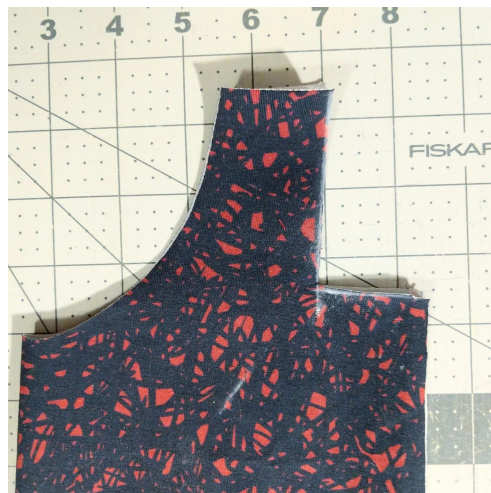


Clydebank Tote Handle Hacks and Alternative Closures by Michelle Graham
#clydebanktotehandlehack #clydebanktotealternativeclosurehack

2. Make another mark that is straight across to the line you made in Step One, from the side cut out of the bag



3. Cut the handles along these marks.



*Cutting the bag this way, will give the bag a different look.

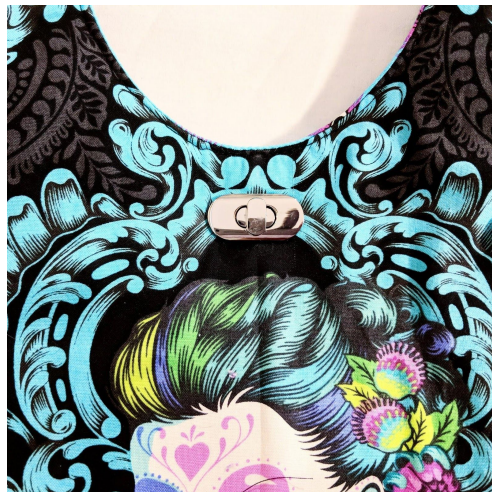


Alternative Closures

- You can use a magnetic snap, Kam Snap or twist lock.

1. For the magnetic snap and Kam snap, you'll place them centered and 1-1/2" down from the center of the Lining Main Panel. Place a piece of firm interfacing behind these snaps, for extra security.

2. For the twist lock, you can place it at the same placement as the snaps mentioned about, or place it centered and 1" down from the center of the Lining Main Panel. This is how I installed mine. Install your style of twist lock using the manufacturer's instructions.



[Clydebank Tote Handle Hacks and Alternative Closures by Michelle Graham](#)
[#clydebanktotehandlehack](#) [#clydebanktotealternativeclosurehack](#)

Tips and Tricks *For those making the handles as per Sara's instructions.

1. I shared a tip for turning the handles, for those who don't have the Hemostats that Sara suggests to use. Here's the link to my original post,

<https://www.facebook.com/groups/sewsweetnessfans/permalink/2203689186377619/>

Here's what I wrote in that post, in case you don't have Facebook...

The trick is to take a piece of string, cut it longer than your handle or tube. It can be yarn, a shoelace, anything. Tie it good around a safety pin. Feed it through the handle or tube. Then take the safety pin, without pulling it all the way out of the tube or handle and pin it to the end of the handle, preferably the one with the foam or fleece, whichever you used. Pinning it there just offers more strength and stability for the next step. Then gently pull the string and that will bring the handle out. If you find the safety pin pops open (I had this happen a couple of times), put a piece of painters tape around it, this helps keep it closed.

*You can also sew one end of the string to the short end of the handle, the string will be sandwiched between the exteriors of the handle. Then you'll carefully pull the string to pull the handle right slides out.

2. You can use the Fasturn Turning Tool or a hook, like in my picture to turn the handles.



3. When sewing the handles, in Step 23 of the pattern, instead of not sewing the top 2", you can leave this longer. This helps make turning the handles easier.

4. When you cut the foam or fleece for your bag, you can cut this interfacing, so it won't be in your handles. If you do this, you'll want to add Shape Flex to the exterior side of the handles.

[Clydebank Tote Handle Hacks and Alternative Closures by Michelle Graham](#)
[#clydebanktotehandlehack](#) [#clydebanktotealternativeclosurehack](#)

Extras

1. You can make your handles double sided, using Sara's tutorial, <https://www.youtube.com/watch?v=Mp1Rxc4WIKo&t=97s>
2. You can add a crossbody/shoulder strap to your bag. You'll place the tabs centered to the side panel. You can use Sara's tutorial for making this strap, <https://www.youtube.com/watch?v=7okNOWVO02k&t=496s>
3. You can attach the crossbody/shoulder strap using Purse Tabs, using Sara's tutorial, <https://www.youtube.com/watch?v=bNI9AFWxxFk&t=4s>
4. Instead of using the hardware I mentioned in any of my hacks, you can make rolled handles using Sara's tutorial, <https://www.youtube.com/watch?v=dqKuAD5U5y4&t=13s>

Hardware

You can find the Hardware needed on Sara's site,

<https://sewsweetness.com/product-category/hardware?v=3e8d115eb4b3>