



Windsor Pouch

Sara Lawson



Sew Sweetness

Windsor Pouch

Use a pretty lace zipper to add some extra creativity to your run-of-the-mill box pouch! This pouch is great for storing school supplies, sewing notions, or cosmetics.

**Seam allowance is 1/4" (6mm) unless otherwise noted.
Please read all instructions before beginning.**

Finished Size: 9-1/2" long x 4" high x 3-1/2" deep

All cutting measurements given throughout the pattern are *width x height*.

SUPPLIES

- fat quarter or 1/4 yard/metre of exterior fabric
- fat quarter or 1/4 yard/metre of lining fabric
- 30" x 8" or 16" x 16" piece of piece of foam interfacing (By Annie's Soft and Stable, Pellon Flex Foam, Bosal In-R-Form, or automotive headliner
- 1/2 yard/metre 20" wide Pellon SF-101 Shape Flex fusible woven interfacing (medium-weight fusible)
- 16" lace/decorative zipper

NOTIONS

- Clover Wonder Clips or pins
- Iron
- Pressing cloth
- Rotary Cutter and Cutting Mat
- Scissors
- Disappearing Ink Fabric Marker
- Zipper foot

CUTTING INSTRUCTIONS

Please cut your fabric pieces in the order listed, so that you will have plenty of fabric for the project. When printing pattern pieces, always make sure your printer is set to scaling at 'none' or 'actual size' so pieces print at correct size.

IMPORTANT: Measure the tester 1" or 4cm square to make sure that your pattern pieces printed at the correct size.

Helpful Hint: If you plan to quilt your exterior pieces to interfacing, I recommend rough-cutting them approximately 1" (2.5cm) larger to account for shrinkage when machine quilting.

Cut from Exterior Fabric, Lining Fabric, foam interfacing, and Shape Flex:

- (2) Main Panel, using the Main Panel pattern piece, cut on the fold (make sure to mark which edge is the top edge)

Cut from Exterior Fabric and Shape Flex:

- (1) Handle, 4" x 6"

Step-by-step video available at www.sewsweetness.com

ATTACH THE INTERFACING

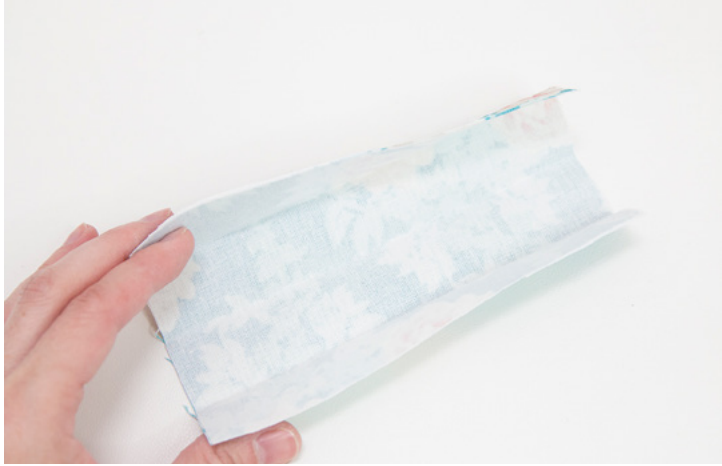
1. Place the fusible (tacky) side of the Shape Flex against the wrong side of the Lining Main Panel. Fuse according to manufacturer instructions. Repeat for the remaining Lining Main Panel and the Handle.

Helpful Hint: To fuse Shape Flex, first place the fabric face down, followed by the interfacing (tacky side down), then the pressing cloth. I lightly spritz the pressing cloth with water, then iron, overlapping each area, for approximately 10 seconds on each spot. When finished, it should be firmly attached to your fabric.

2. Place the Exterior Main Panel with the wrong side of the fabric against the foam interfacing. Pin in place. Baste Panel using 1/8" (3mm) seam allowance. Repeat for the remaining Exterior Main Panel.

Helpful Hint: I like to gently pull my fabric taut as I am basting it to the foam interfacing for a tight, crisp finish. If you would like, machine quilt the foam interfacing pieces at this time; if you rough-cut, cut to the final size in the instructions.

MAKE THE POUCH



3. Press the Handle in half along the long edge, wrong sides together, so that both **long edges meet**. Press. Open and then fold the top of the fabric down to the crease. Open out again, then fold the other edge in to meet the crease and press. Fold the entire piece along the first fold and press.

Topstitch both long edges of the Handle using 1/8" seam allowance. Set the Handle to the side for now.



4. Sew one Exterior Main Panel and one Lining Main Panel right sides together along the top edge, making sure to **start and stop 1/2" away from each end**. Press the fabrics wrong sides together. **Making sure to start and stop 1/2" away from each end, topstitch using a scant 1/4" seam allowance.**

Repeat for the remaining Exterior Main Panel and Lining Main Panel.

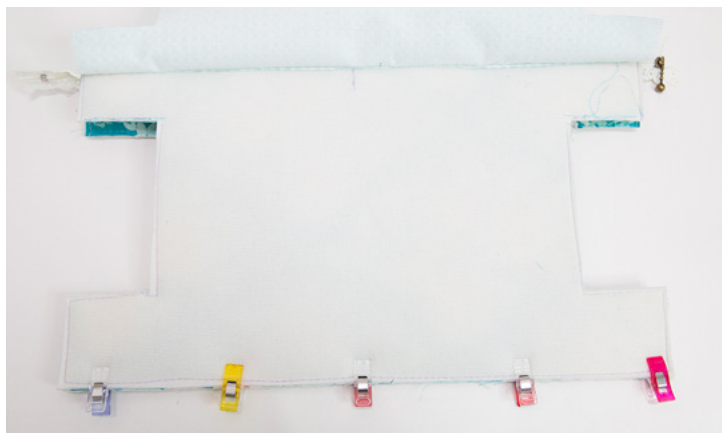
Helpful Hint: If you prefer, trim back the foam to 1/8" (duckbill scissors are helpful here, if you have them).



5. Draw a line along the finished edge of each Exterior Main Panel that is 1/4" along the finished edge (I like using Clover Chaco white or white chalk for this).

Center the zipper along the line. Using your zipper foot, stitch the zipper in place 1/4" away from the zipper teeth. **Make sure to start and stop 1/2" away from each end.**

Repeat for the opposite long edge of the zipper.

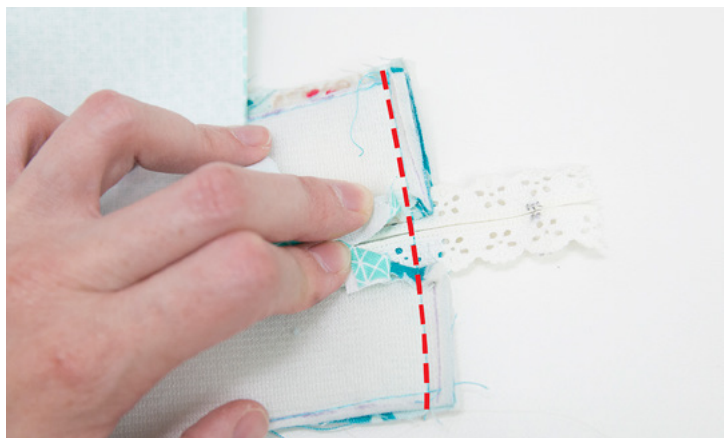


6. Bring the exterior fabrics right sides together and sew across the bottom. Press the seam open.

Repeat for the lining, except leave a 6" opening, centered.



7. Insert the Handle into the two openings on the side of the pouch where the zipper pull will be when the zip is closed. Each raw edge of the Handle will be in one of the openings in the pouch, and the Handle should be centered on the exterior fabric. Make sure that the Handle is not twisted. Pin in place, then stitch the Handle to the exterior fabric in each opening using 1/8" seam allowance.



8. Zip the zipper toward the center. Starting with one end of the exterior, bring the edge with the zipper directly on top the bottom of the pouch with the seam (make sure the lining is moved out of the way). Sew.

Now lay the respective lining directly on top of the exterior seam that you just sewed. Sew, making sure to start and stop 1/2" away from either end (you will be sewing through lining and exterior). I recommend going back and finish the first and last 1/2" of the lining by sewing through lining fabrics only.

Repeat for the opposite end of the pouch.



9. Pinch one opening on the left-hand side of the pouch so that the raw edges meet. Pin, then stitch. Repeat for the second opening on the left-hand side, and for both openings on the right-hand side.

Repeat for the lining.

10. Turn the pouch right side out through the opening in the lining. Press the opening in the lining toward the wrong side by 1/4". Close the opening in the lining by machine using 1/8" seam allowance or slipstitch by hand.

My tip for pressing this pouch is that it should ultimately have a boxed shape, and pressing will help with that. Pinch the top corners and press that edge flat; do the same for the bottom and sides until you have worked your way around the pouch and it has a nice boxy shape.

Need help?? E-mail me any time at sara@sewsweetness.com

Please add your finished bag to my group!

<https://www.facebook.com/groups/sewsweetnessfans/>

Tag your finished bag on Instagram using hashtag #windsorpouch and #sewsweetnesspattern

Copyright ©Sew Sweetness 2019 Cover design by Alison Glass.

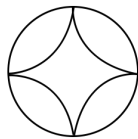
Thank you for honoring the copyright law! Your support will enable me to design many more bag patterns!

<http://www.sewsweetness.com> Please check out my site for free tutorials on bags and bag-making techniques!

4cm

1" square

Top of Pouch (please mark on wrong side of fabric)



Sew Sweetness
Windsor Pouch

Main Panel pattern piece

cut 2 from exterior fabric

cut 2 from lining fabric

cut 2 from foam interfacing

cut 2 from Shape Flex

Place on the fold