



# Faithwell Storage Bin

Sara Lawson



# Sew Sweetness

## Faithwell Storage Bin

Round and square totes that are great for home or sewing room storage (especially great for scraps!). Each tote has a cut-out handle. Easy and quick to put together!

**Seam allowance is  $1/4"$  (6mm) unless otherwise noted.**

**Please read all instructions before beginning.**

<b>Finished Size:</b>	small circle - 8" diameter x 7" tall	(20cm diameter x 17.8cm tall)
	medium circle - 10" diameter x 9" tall	(25cm diameter x 23cm tall)
	large circle - 13" diameter x 12" tall	(33cm diameter x 30cm tall)

**All cutting measurements given throughout the pattern are *width x height*.**

### SUPPLIES

- 1 yard/metre of exterior fabric
- 1 yard/metre of lining fabric
- 1/2 yard/metre of foam interfacing **OR** 3/4 yard/metre for large circle (By Annie's Soft and Stable, Pellon Flex Foam, Bosal In-R-Form, or automotive headliner; if purchasing Flex Foam, please purchase at least double the amount as it is only 20" wide)
- 1-1/2 yard/metre 20" wide Pellon SF-101 Shape Flex fusible woven interfacing (medium-weight fusible)
- Optional: 12-1/2" x 12-1/2" piece of 20" wide Decovil Heavy or Peltex #71 ultra-firm fusible (for a firm bottom)

### NOTIONS

- Clover Wonder Clips or pins
- Iron
- Pressing cloth
- Rotary Cutter and Cutting Mat
- Scissors
- Disappearing Ink Fabric Marker

## CUTTING INSTRUCTIONS

Please cut your fabric pieces in the order listed, so that you will have plenty of fabric for the project. When printing pattern pieces, always make sure your printer is set to scaling at 'none' or 'actual size' so pieces print at correct size.

**IMPORTANT:** Measure the tester 1" or 4cm square to make sure that your pattern pieces printed at the correct size.

*Helpful Hint: If you plan to quilt your exterior pieces to interfacing, I recommend rough-cutting them approximately 1" (2.5cm) larger to account for shrinkage when machine quilting.*

## FOR CIRCLE STORAGE BIN

**Cut from Exterior Fabric, Lining Fabric, foam interfacing, and Shape Flex:**

- |                |                           |                    |
|----------------|---------------------------|--------------------|
| (1) Main Panel | small - 25-1/2" x 7-1/2"  | (64.8cm x 19cm)    |
|                | medium - 31-1/2" x 9-1/2" | (80cm x 24.1cm)    |
|                | large - 40-1/2" x 12-1/2" | (102.9cm x 31.8cm) |

- (1) Bottom Panel, using the Bottom Panel pattern piece for your chosen size, cut on the fold \*

\*if using Optional Decovil Heavy/Peltex, cut from Bottom Panel piece except trim 1/4" (6mm) around outer edge

**Instructions are the same for all sizes unless otherwise noted. Size small is pictured.**

**Step-by-step video available at [www.sewsweetness.com](http://www.sewsweetness.com)**

## ATTACH THE INTERFACING

1. If you are using the optional Decovil/Peltex, center the Decovil/Peltex on the foam Bottom Panel. Fuse in place.
2. Place the fusible (tacky) side of the Shape Flex against the wrong side of the Lining Main Panel. Fuse according to manufacturer instructions. Repeat for the Lining Bottom Panel.

*Helpful Hint: To fuse Shape Flex, first place the fabric face down, followed by the interfacing (tacky side down), then the pressing cloth. I lightly spritz the pressing cloth with water, then iron, overlapping each area, for approximately 10 seconds on each spot. When finished, it should be firmly attached to your fabric.*

3. Place the Exterior Main Panel with the wrong side of the fabric against the foam interfacing. Pin in place. Baste Panel using 1/8" (3mm) seam allowance. Repeat for the Exterior Bottom Panel (if you are using the Decovil/Peltex, the fabric will cover the Decovil/Peltex).

*Helpful Hint: I like to gently pull my fabric taut as I am basting it to the foam interfacing for a tight, crisp finish. If you would like, machine quilt the foam interfacing pieces at this time; if you rough-cut, cut to the final size in the instructions.*

## MAKE THE CIRCLE STORAGE BIN



4. Press the **top edge** of the Exterior Main Panel toward the wrong side by 1/4" (6mm).

Repeat for the Lining Main Panel.

*Helpful Hint: I used Wonder Clips to hold the pressed edge of the Exterior Main Panel. You can leave these Wonder Clips on until the end of the pattern.*



5. Cut the oval dashed line out from the paper Handle Template. Fold the Lining Main Panel in half so that both short ends meet; mark the center. Also fold the paper Handle Template in half and crease the center.

Align the center of the Handle Template with the center of the **wrong side** of the Lining Main Panel, with the top raw edges aligned. Draw the Oval on the wrong side of the fabric. This will be the Stitching Line.



6. Place the Exterior Main Panel and Lining Main Panel right sides together. Stitch the oval Stitching Line, directly on top of the lines.

Cut the inner oval, 1/4" (6mm) away from the stitching line. Notch the seam.

Pull the lining through the exterior through the oval. Press. Topstitch the oval using 1/8" (3mm) seam allowance.

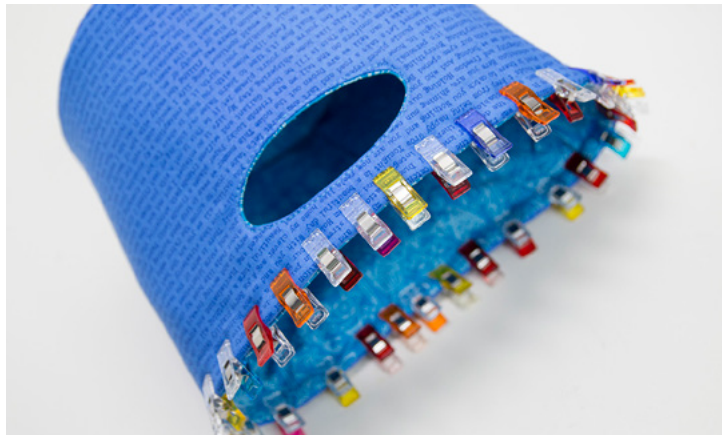
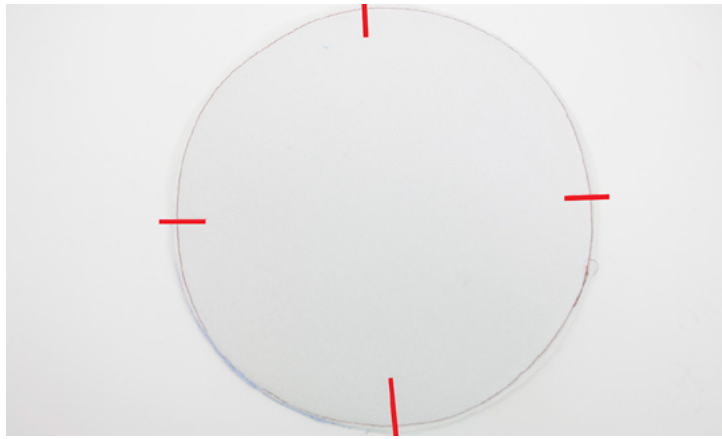
*Helpful Hint: You may find it easier to sew the side edges of the oval by decreasing your stitch length as you approach the sides.*



7. Place the short ends of the Exterior Main Panel right sides together. Sew the short end (flatten the pressed edge to sew); press the seam open.

Repeat for the Lining Main Panel, except start out at 1/4" (6mm) seam allowance, veer in toward 1/2" (1.3cm), then back down to 1/4" (6mm) seam allowance.





8. Flatten the Main Panel so that the seam is on one end. Mark the opposite end with your fabric marker (you will be marking the wrong side of the fabric at both top and bottom). Bring that marking directly on top of the seam, and mark the opposing ends. These will be known as the Quarter Markings (there will be 4 quarter markings, including the seam).

Also transfer the Quarter Markings from the Bottom Panel paper pattern piece to the wrong side of the Exterior Bottom Panel and Lining Bottom Panel.

9. Move the Exterior Main Panel out of the way so that you can pin the Lining Main Panel right sides together with the **bottom edge** of the Lining Main Panel, matching up Quarter Markings.

Pin, then **sew the lining using 1/2" (1.3cm) seam allowance**. Trim the lining to 1/4" (6mm) seam allowance.

Repeat to sew the Exterior Main Panel to the Exterior Bottom Panel, except **use 1/4" (6mm) seam allowance for the exterior**.

10. Place the exterior and lining wrong sides together, with the exterior facing right side out. Line up the quarter markings.

Align the pressed edges at the top of the storage bin, then pin in place. Topstitch the top edge of the storage bin using 1/8" (3mm) seam allowance.

Press well.

*Helpful Hint: If you prefer, you can use a bit of spray adhesive (that is meant for fabric) on the wrong side of your exterior before topstitching the lining in place.*

Congratulations, you've finished!

**Need help?? E-mail me any time at** [sara@sewsweetness.com](mailto:sara@sewsweetness.com)

**Please add your finished bag to my group!**

<https://www.facebook.com/groups/sewsweetnessfans/>

Tag your finished bag on Instagram using hashtag #faithwellstoragebin and #sewsweetnesspattern

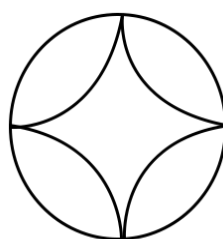
Copyright ©Sew Sweetness 2019 Cover design by Alison Glass.

Thank you for honoring the copyright law! Your support will enable me to design many more bag patterns!

<http://www.sewsweetness.com>

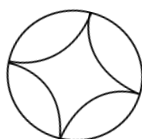
Please check out my site for free tutorials on bags and bag-making techniques!

quarter marking



**Sew Sweetness**  
Faithwell Storage Bins

quarter marking



**Sew Sweetness**  
Faithwell Storage

Place on the

quarter marking

quarter marking

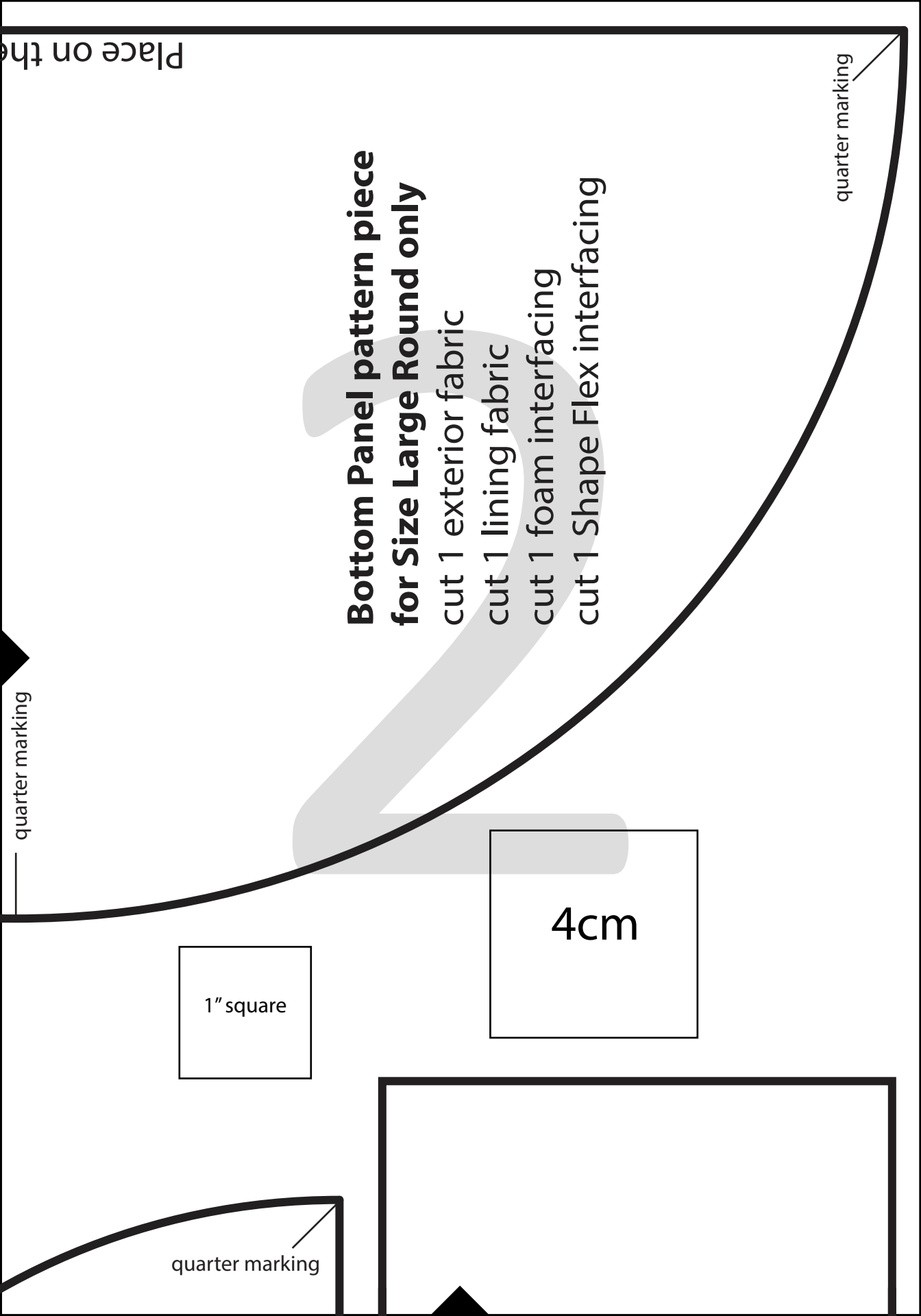
**Bottom Panel pattern piece  
for Size Large Round only**

- cut 1 exterior fabric
- cut 1 lining fabric
- cut 1 foam interfacing
- cut 1 Shape Flex interfacing

1" square

4cm

quarter marking

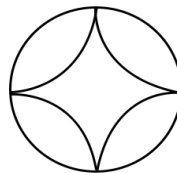


ge Bins

quarter marking

Place on the Fold

**Bottom Panel pattern piece  
for Size Small Round only**  
cut 1 exterior fabric  
cut 1 lining fabric  
cut 1 foam interfacing  
cut 1 Shape Flex interfacing



**Sew  
Faithwo**

quarter marking

quarter marking

**Bottom Pa  
for Size M**

cut 1 exter  
cut 1 lining  
cut 1 foam  
cut 1 Shape



# Sew Sweetness

## Faithwell Storage Bins

Panel pattern piece  
Medium Round only  
or fabric  
fabric  
interfacing  
e Flex interfacing

quarter marking

Place on the Fold



**Sew Sweetness**  
Faithwell Storage Bins

Do not cut Oval  
This is a Stitching Line

## Handle Template