



Discotech Clutch

Sara Lawson



Sew Sweetness

Discotech Clutch

This confident beginner-friendly clutch features stylish metal screw-in handles, lining pockets, and an inner snap closure. Perfect for a night out on the town, you will be able to sew this clutch up quickly for a fast and chic finish!

All seam allowances are 1/4" unless otherwise noted. All pattern pieces include the seam allowance. Please read all instructions before beginning.

Finished Size: 12" long x 8" tall

All cutting measurements given throughout the pattern are *length x height*.

SUPPLIES

- 1 fat quarter or 1/4 yard of Exterior Fabric
- 1/2 yard of Lining Fabric
- 1/2 yard of 20" wide Pellon SF-101 Shape Flex fusible woven interfacing (or light-weight fusible interfacing)
- 1/4 yard of foam interfacing (By Annie's Soft and Stable, Pellon Flex Foam, Bosal In-R-Form, or automotive headliner; if using Flex Foam, it is only 20" wide so please purchase double the amount)
- Two 3-1/2" metal oval cut-out handles (Available at www.sewsweetness.com or ask at your local quilt shop)
- 1/2" magnetic snap
- Fabric glue

NOTIONS

- Iron
- Pressing cloth
- Rotary Cutter and Cutting Mat
- Scissors
- Optional: Walking foot for sewing the Soft and Stable layers together, if needed.
- Disappearing Ink Fabric Marker
- Seam sealant
- Turning tool
- Optional: denim needle

CUTTING INSTRUCTIONS

Please cut your fabric pieces in the order listed, so that you will have plenty of fabric for the bag. When printing pattern pieces, always make sure your printer is set to scaling at 'none' or 'actual size' so pieces print at correct size.

Measure the tester 1" square to make sure that your pattern pieces printed at the correct size.

Helpful Hint: Feel free to use post-it notes to label your cut fabric pieces and easily stay organized. If you plan to quilt your exterior pieces to interfacing, I recommend rough-cutting them approximately 1" larger to account for shrinkage when machine quilting.

From the exterior fabric, cut:

- (2) Exterior Main Panel, using the Main Panel pattern piece, cut on the fold

From the lining fabric, cut:

- (2) Lining Main Panel, using the Main Panel pattern piece, cut on the fold
- (4) Pocket, using the Main Panel pattern piece, fold down at the dotted line and cut on the fold

From the foam interfacing, cut:

- (2) Exterior Main Panel, using the Main Panel pattern piece, cut on the fold
- (2) 1-1/2" x 1-1/2" squares to reinforce magnetic snaps

From the Shape Flex, cut:

- (2) Lining Main Panel, using the Main Panel pattern piece, cut on the fold

ATTACH THE INTERFACING

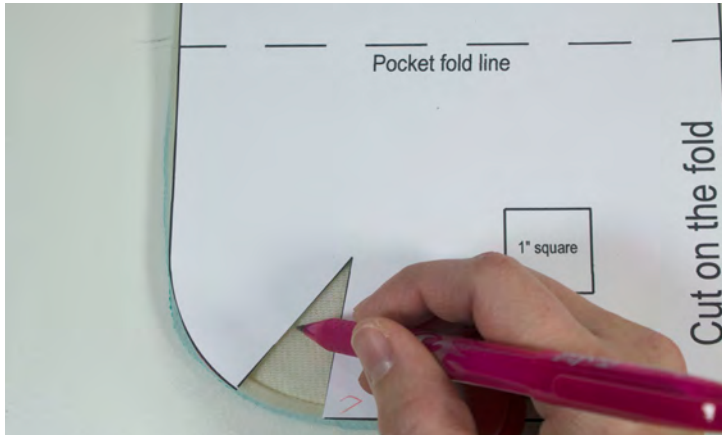
1. Place the fusible (tacky) side of the Shape Flex against the wrong side of one Lining Main Panel. Fuse according to manufacturer instructions. Repeat for the Lining Main Panel.

Helpful Hint: To fuse Shape Flex, what I usually do is first place the Strap face down, followed by the interfacing (tacky side down), then my pressing cloth. I lightly spritz the pressing cloth with water, then iron, overlapping each area, for approximately 10 seconds on each spot. When finished, it should be firmly attached to your fabric.

2. Place one Exterior Main Panel with the wrong side of the fabric against the foam interfacing. Pin in place. Baste around the outer edge of the fabric using a 1/8" seam allowance. Repeat for the remaining Exterior Main Panel.

Helpful Hint: I like to gently pull my fabric taut as I am basting it to the foam interfacing for a tight, crisp finish. If you would like, machine quilt the foam interfacing pieces at this time; if you rough-cut, cut to the final size in the cutting instructions.

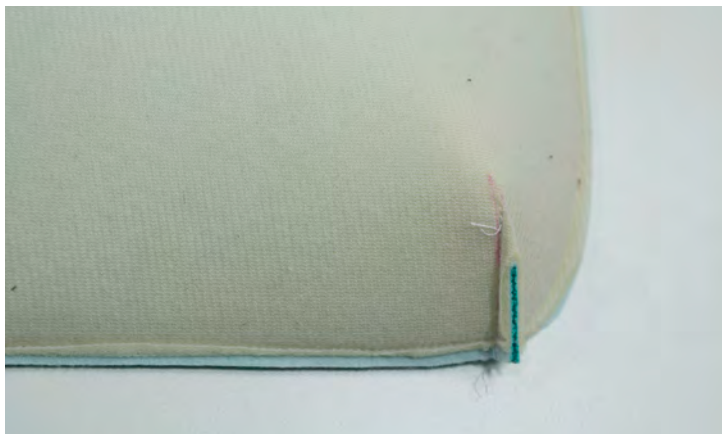
MAKE THE DARTS



3. Flip to the wrong side of one Exterior Main Panel. Transfer the dart markings from the Main Panel pattern piece to the wrong side of the Exterior Main Panel on both halves.



4. Pin the left-hand dart with your fingers so that the fabric is right sides together, and adjust so that both lines of the dart are even. Sew on top of the line through both layers. Repeat for the right-hand dart.



5. Trim both seams from the previous step to 1/8" and press.

6. Repeat Steps 3-5 for the remaining Exterior Main Panel.
7. Place both Exterior Main Panels right sides together, making sure to align the darts. Sew along the sides and bottom. Notch the curved edges.

ASSEMBLE THE LINING



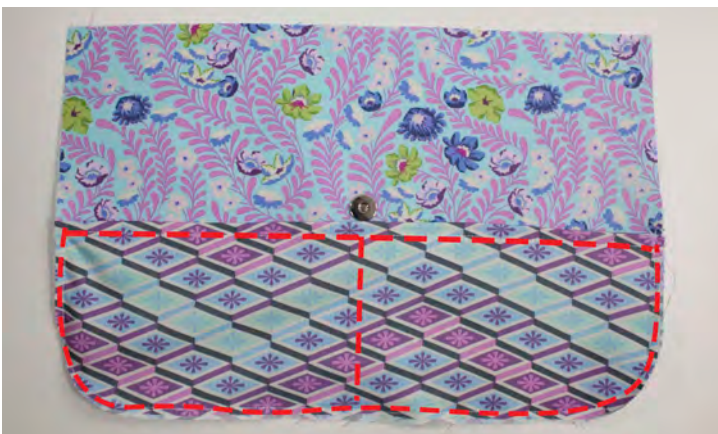
8. Make a mark on one Lining Main Panel that is down 4" from the top edge and centered. Using the prongs from one half of the magnetic snap, mark prong placement over the mark that you made. Using your seam ripper, make two slits for the prongs (do the same for one 1-1/2" square of foam interfacing; Peltex or template plastic can be used instead if you prefer). I like to follow up the slits with a dab of seam sealant. Slide the prongs through the right side of the fabric, followed by the 1-1/2" square. Open the prongs outward. Repeat for the remaining Lining Main Panel and other half of the magnetic snap.



9. Place two Pocket pieces right sides together. Sew along the top long edge using a 1/4" seam allowance. Press the seam open.



10. Flip the Pocket so that the fabrics are wrong sides together and press. Topstitch 1/4" away from the finished edge.



11. Place one Lining Main Panel in front of you, right side up. Place one Pocket directly on top of the Lining Main Panel. The bottom and side edges of the Pocket should be aligned with the bottom and side edges of the Lining Main Panel. Baste along the sides and bottom of the Pocket using a 1/8" seam allowance.

12. Finger press the Lining Main Panel, vertically, in order to find the center. Sew on top of that crease, on top of the Pocket only. This will create a divide, thus two Pocket segments.

13. Repeat Steps 9-12 for the remaining Pockets and Lining Main Panel.
14. Repeat Steps 3-7 for the lining, except leave a 6" opening at the bottom.

FINISH THE CLUTCH



15. Turn the exterior right side out. Place the lining over the exterior so that they are right sides together. Align the side seams, then pin in place. Sew along the entire top edge of the bag.

16. Topstitch around the entire top opening that you sewed in the previous step using a 1/8" seam allowance.
17. Turn the clutch right side out through the hole in the lining. Press. Topstitch or slipstitch the hold in the lining closed.

Helpful Hint: Before closing the opening, I found it helpful to use a washable glue stick (I prefer Elmer's) to put some glue on the foam interfacing that is flush against the wrong side of the lining fabric, covering the area where the metal oval will be installed. After applying glue stick, set with a hot, dry iron. This keeps all layers of interfacing and fabric as one unit in that area, which will make the last two steps easier.

18. Make a mark on the front of the clutch that is down 1-3/4" from the top edge and centered.



19. Center one of the metal ovals with the opening over the mark that you made. Install the oval over that mark - For my oval, I needed to draw and cut the inner circle of the oval but a smidge larger.



20. Remove the screws. Mark the position of the screws, then use an awl to pierce the fabric through all layers where the markings were (make sure that the hole made with the awl is big enough so that the screw can clear the opening).



Attach the front of the oval (pictured above). Seat the openings for the screws in the holes that you made in the fabric; I used my awl to push back the fabric away from the openings for the screws because those openings need to stay clear in order for the screw to be able to screw in place.



Attach the front and back of the oval (if necessary, use a small amount of fabric glue here to permanently adhere the oval), then screw the screws back in.

Congratulations, you've finished!

Need help?? E-mail me any time at sara@sewsweetness.com

Please add your finished bag to my Flickr group! <http://www.flickr.com/groups/sewsweetness/> or tag your finished bag on Instagram or Twitter using hashtag #discotechclutch and #sewsweetnesspattern

Copyright ©Sew Sweetness 2016 for Sew Mama Sew
Cover design by Alison Glass.

<http://www.sewsweetness.com>

Please check out my site for free tutorials on bags and bag-making techniques!



Sew Sweetness

Discotech Clutch

Main Panel pattern piece

Cut 2 exterior fabric

Cut 2 lining fabric

Cut 2 foam interfacing

Cut 2 Shape Flex

Pocket fold line

1" square

Dart

Place on the Fold