



Brookfield Bag

Sara Lawson



This small bag will allow you to try out several fun bag-making techniques; adding a metal twist lock, using piping in a bag, making darts, and adding elastic pockets. Use your favorite print and combine it with a coordinating solid to make your fabric pop! I made this bag using 'Jungle Ave.', my line of fabric for Art Gallery Fabrics.

All seam allowances are 1/2" unless otherwise noted. All pattern pieces include the seam allowance.

Please read all instructions before beginning.

Finished Size: 11" long x 7" tall

All cutting measurements given throughout the pattern are length x height.

Supplies

1 fat quarter or 1/4 yard of Exterior Fabric

1/2 yard of solid fabric for the straps/accents

1/2 yard of Lining Fabric

2 yards of 20" wide Pellon SF-101 Shape Flex fusible woven interfacing (or light-weight fusible interfacing)

1/4 yard of By Annie's Soft and Stable, available at local quilt shops or on-line

(Soft and Stable is a 1/8" thick, foam sew-in interfacing; one of my testers also recommends automotive headliner fabric in place of the Soft and Stable; you can also substitute a needled fleece fusible interfacing for the Soft and Stable, such as Pellon #TP971F Thermolam Plus fusible interfacing)

Small metal twist lock (mine was 1-1/4" x 3/4") – a 1/2" magnetic snap may be substituted for the metal twist lock

Fabric glue (for use with the twist lock, if needed)

Two metal swivel clips (with opening of 3/4" or 1" wide)

Two d-rings OR rectangle rings (with opening of 3/4" or 1" wide)

1 yard of 6/32" cotton cording

2/3 yard of 1/4" knit elastic

Notions

Zipper foot

Iron

Pressing cloth

Rotary Cutter and Cutting Mat

Scissors

Optional: Walking foot for sewing the Soft and Stable layers together, if needed.

Disappearing Ink Fabric Marker

Seam sealant

Turning tool

Safety pin

Optional: denim needle

Cutting

Please cut your fabric pieces in the order listed, so that you will have plenty of fabric for the bag. When printing pattern pieces, always make sure your printer is set to scaling at 'none' so pieces print at correct size.

Helpful Hint: Feel free to use post-it notes to label your cut fabric pieces and easily stay organized.

From the exterior fabric, cut:

(2) Exterior Main Panel, using the Main Panel pattern piece, cut on the fold

(2) Flap, using the Flap pattern piece

From the solid fabric, cut:

(1) Strap, 40" x 3"

(2) Strap Extender, 3" x 3"

(4) Corner Accent, using the Corner Accent pattern piece (cut 2 on the right side of the fabric, then cut 2 on the wrong side of the fabric, so that you will have two pairs of mirror image pieces)

(2) Top Panel, using the Top Panel pattern piece, cut on the fold

Use the remaining solid fabric to cut 1-1/4" wide bias strips on a 45 degree angle; piece the strips together along the short ends to make a 1 yard continuous strip

From the lining fabric, cut:

(2) Lining Main Panel, using the Main Panel pattern piece, cut on the fold

(4) Pocket, using the Pocket pattern piece, cut on the fold

From the Soft and Stable, cut:

- (2) Exterior Main Panel, using the Main Panel pattern piece, cut on the fold
- (1) Flap, using the Flap pattern piece

From the Shape Flex, cut:

- (1) Strap, 40" x 3"
- (2) Lining Main Panel, using the Main Panel pattern piece, cut on the fold
- (2) Top Panel, using the Top Panel pattern piece, cut on the fold
- (2) Strap Extender, 3" x 3"
- (4) Corner Accent, using the Corner Accent pattern piece (cut 2 on the right side of the fabric, then cut 2 on the wrong side of the fabric, so that you will have two pairs of mirror image pieces)
- (1) Flap, using the Flap pattern piece

Attach the Interfacing

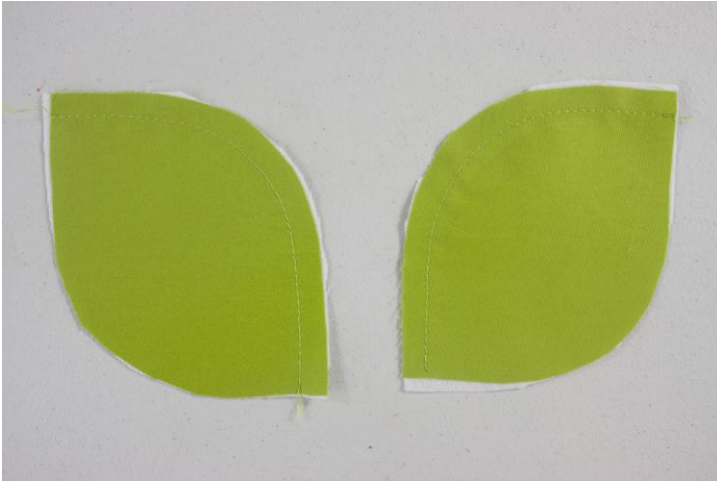
1. Place one Exterior Main Panel with the wrong side of the fabric against the Soft and Stable. Pin in place. Baste around the outer edge of the fabric using a 1/8" seam allowance. Repeat for the remaining Exterior Main Panel and one Flap.

Helpful Hint: I like to gently pull my fabric taut as I am basting it to the Soft and Stable for a tight, crisp finish. If you would like, machine quilt the Soft and Stable pieces at this time.

2. Place the fusible (tacky) side of the Shape Flex against the wrong side of the Strap. Fuse according to manufacturer instructions. Repeat for the Lining Main Panel, Top Panels, Strap Extenders, Corner Accents, and one Flap.

Helpful Hint: To fuse Shape Flex, what I usually do is first place the Strap face down, followed by the interfacing (tacky side down), then my pressing cloth. I lightly spritz the pressing cloth with water, then iron, overlapping each area, for approximately 10 seconds on each spot. When finished, it should be firmly attached to your fabric.

Attach the Accents



3. Sew along the top curved edge of one Bottom Accent using a 1/4" seam allowance. Repeat for all 4 Accents.

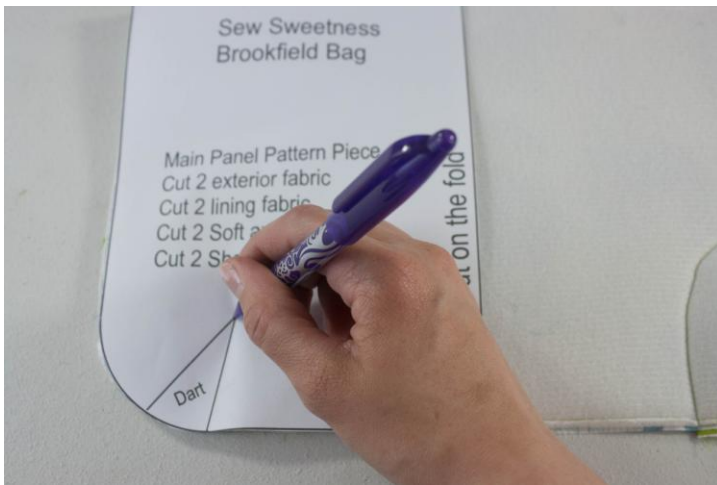
Helpful Hint: Use thread that matches your accent fabric to help the stitches stay easily hidden. If they are visible, no problem; just remove the stitches from this step with your seam ripper after you have attached the Bottom Accents to the Exterior Main Panels.



4. Using your iron, ease the fabric toward the wrong side along the stitched edge. The line of stitching should make the curved edge ease nicely. Repeat for all 4 Bottom Accents.



5. Place one Bottom Accent on the bottom left-hand corner of one Exterior Main Panel; the edge of the Bottom Accent that was not pressed in the previous step should be aligned with the bottom raw edge of the Exterior Main Panel. Pin, then sew along the entire outer edge of the Bottom Accent using a 1/8" seam allowance. Repeat for an additional Bottom Accent and the bottom right-hand corner of the same Exterior Main Panel. Also repeat this step for the remaining Bottom Accents and Exterior Main Panel.



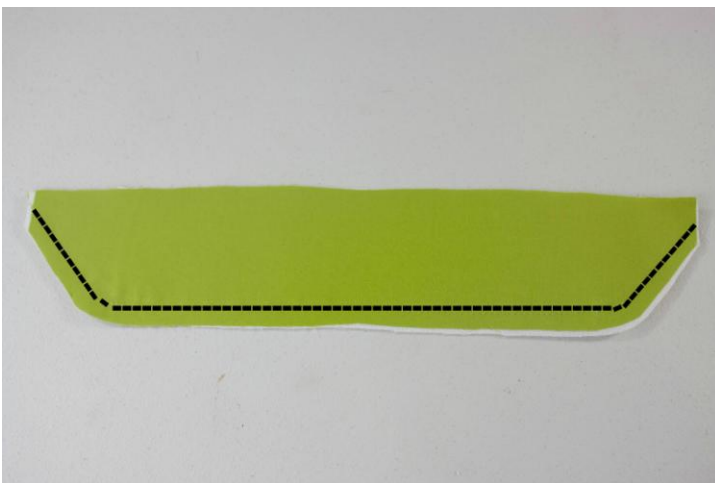
6. Flip to the wrong side of one Exterior Main Panel. Transfer the dart markings from the Main Panel pattern piece to the wrong side of the Exterior Main Panel on both halves.

Helpful Hint: I like to make a small hole in my paper pattern piece at the point of the dart; that way I can poke my fabric marker through the hole and make a dot at that point. Then I make a mark at the open end of each dart, and connect the points with my ruler.



7. Pin the left-hand dart with your fingers so that the fabric is right sides together, and adjust so that both lines of the dart are even. Sew on top of the line through both layers. Repeat for the right-hand dart.

8. Trim both seams from the previous step to 1/8" and press.
9. Repeat Steps 6-8 for the remaining Exterior Main Panel.



10. Sew along the bottom and two diagonal edges of the Top Panel using a 1/4" seam allowance. Again, use thread that matches your fabric.

11. Using your iron, ease the fabric toward the wrong side along the stitched edge.



12. Place one Top Panel at the top of one Exterior Main Panel, top raw edges aligned. Pin, then sew along the entire outer edge of the Top Accent using a 1/8" seam allowance. Repeat for the remaining Top Panel and Exterior Main Panel.

Attach the Twist Lock OR Magnetic Snap

Complete Steps 13-17 if you are using the Twist Lock.



13. Place both Flaps right sides together. Pin. Sew along the entire outer edge using a 1/4" seam allowance except leave the top short straight edge unsewn. Notch (cut small v's) the curved edges, being careful not to cut into the seam allowance.



14. Turn the Flap right side out and press. Topstitch the finished edge using a 1/8" seam allowance.

15. Make a mark on the Flap that is down 3" from the top unewn edge and in 1-3/4" from the left-hand edge.



16. Center the piece of the twist lock with the opening over the mark that you made. Using manufacturer instructions, install the twist lock over that mark (if necessary, use fabric glue here).

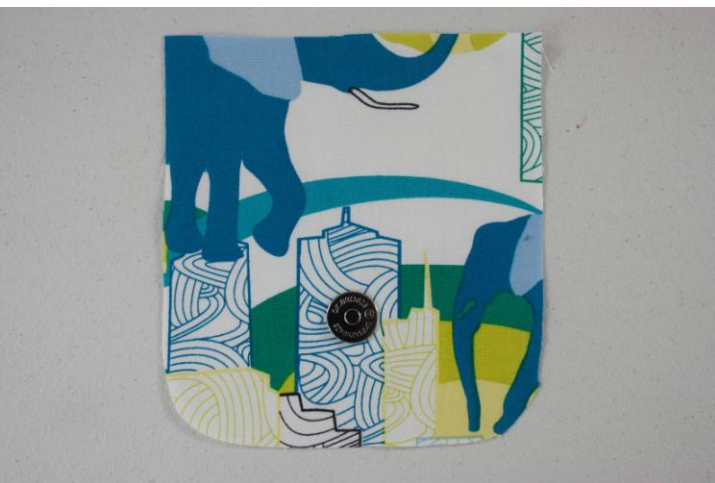


17. Make a mark on one Exterior Main Panel that is down 2" from the top edge and centered. Using the prongs from the remaining half of the twist lock, mark prong placement over the mark that you made. Using your seam ripper, make two slits for the prongs. Slide the prongs through the right side of the fabric and open the prongs outward.

Helpful Hint: I like to follow up the slits from the seam ripper with a dab of seam sealant, to help reinforce the fabric.

Complete Steps 18-22 if you are using the Magnetic Snap.

18. Make a mark on the Flap (the one that is basted to the Soft and Stable) that is down 3" from the top straight edge and 2" in from the left-hand edge.



19. Using the prongs from the smaller half of the magnetic snap (the piece with the 'nub'), mark prong placement over the mark that you made. Using your seam ripper, make two slits for the prongs. Slide the prongs through the right side of the fabric and open the prongs outward.

Helpful Hint: I like to follow up the slits from the seam ripper with a dab of seam sealant, to help reinforce the fabric.



20. Place both Flaps right sides together. Pin. Sew along the entire outer edge using a 1/4" seam allowance except leave the top short straight edge unsewn. Notch (cut small v's) the curved edges, being careful not to cut into the seam allowance.



21. Turn the Flap right side out and press. Topstitch the finished edge using a 1/8" seam allowance.

22. Make a mark on one Exterior Main Panel that is down 3" from the top edge and centered. Using the prongs from the remaining half of the magnetic snap, mark prong placement over the mark that you made. Using your seam ripper, make two slits for the prongs. Slide the prongs through the right side of the fabric and open the prongs outward.

Complete Step 23 for both the twist lock and magnetic snap



23. Take out the Exterior Main Panel without the twist lock/snap. Place the completed Flap at the top of the Exterior Main Panel, with the top edges aligned and centered. The 'wrong' side of the Flap (the part that will not be showing when the Flap is closed) should be facing you. Baste the Flap to the Exterior Main Panel using a 1/4" seam allowance. (the twist lock is pictured here)

Make and Attach the Piping



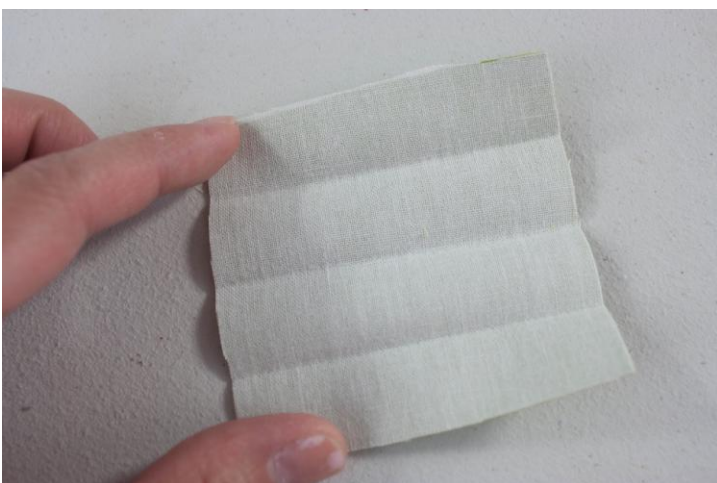
24. Place the cotton cording centered along the length of the assembled solid bias strip. Place both long edges of the strip wrong sides together; pin. Using your zipper foot, sew with the needle next to the cording. This will now be referred to as the piping.



25. Beginning at the top left-hand corner of one Exterior Main Panel, 1/2" down from the top edge (ease the piping off the edge of the fabric), pin the piping in place, with the raw edge of the piping aligned with the raw edges of the Exterior Main Panel. Continue easing the piping through the left side, bottom, and right side of the Exterior Main Panel. Again, ease the piping off the edge of the fabric 1/2" away from the top right-hand corner. Trim excess piping. Clip the curved edges on the Exterior Main Panel.

26. Place both Exterior Main Panels right sides together, making sure to align the corner accents. Sew along the sides and bottom using a smidge over 1/4" seam allowance. Turn right side out and press. Remove the zipper foot from your machine.

Make and Attach the Straps

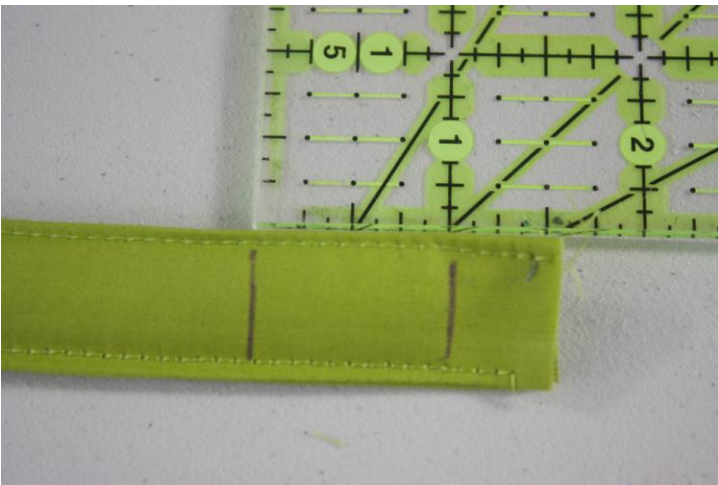


27. Fold on Strap Extender in half. Press. Fold the bottom long edge of the Strap up toward the creased center. Press. Also fold down the top long edge of the Strap Extender toward the creased center. Press. Fold in half and press.



28. Topstitch along both long edges, 1/8" from each edge.

29. Repeat Steps 27-28 for the Strap, making sure to fold along the long edges.



30. Draw a line on each short end of the Strap that is 1/2" in and another that is 1-1/2" in. Press along those lines.



31. Slide a swivel clip onto each end of the Strap at the second crease. Sew a small rectangle on each end, enclosing the first pressed edge against the Strap. Put the Strap to the side for now.



32. Fold one Strap Extender in half so that both raw edges meet, and slide a d-ring/rectangle ring onto the crease. Baste the raw edges of the Strap Extender together using a 1/8" seam allowance, and also sew a horizontal line of stitching approximately 1/4" away from the ring.

33. Place one Strap Extender on the front of the bag, 1" in from the left-hand edge. The raw edge of the Strap Extender should be aligned with the top raw edge of the bag. Baste in place using a 1/8" seam allowance. On the back of the bag, place the remaining Strap Extender 1" in from the left-hand edge. Baste.

Assemble the Lining

34. Cut the elastic so that you have two 11" pieces.

35. Place two Pocket pieces right sides together. Sew along the top long edge using a 1/4" seam allowance. Press the seam open.



36. Flip the Pocket so that the fabrics are wrong sides together and press. Topstitch 1" away from the finished edge to create a casing.

37. Clip the safety pin to one end of the elastic. Push the pinned end of elastic through one end of the casing, easing it along with the pin. Once the unpinned end is aligned with the beginning of the casing, stitch it securely in place using a 1/4" seam allowance.



38. Continue pushing the pinned end of the elastic through until it reaches the opposite end of the casing. Remove the safety pin (being careful not to lose your elastic inside the casing), then stitch that end of the elastic to the end of the casing using a 1/4" seam allowance.

39. Repeat Steps 35-38 for the remaining Pockets and an additional piece of elastic.

40. Repeat Steps 6-9 for the respective Lining pieces.



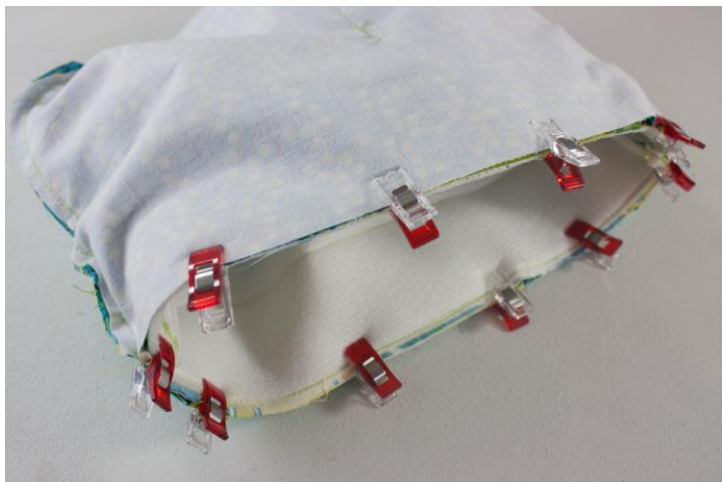
41. Place one Lining Main Panel in front of you, right side up. Place one Pocket directly on top of the Lining Main Panel. The bottom and side edges of the Pocket should be aligned with the bottom and side edges of the Lining Main Panel. Baste along the sides and bottom of the Pocket using a 1/4" seam allowance.

42. Finger press the Lining Main Panel from the previous step, vertically, in order to find the center. Sew on top of that crease, on top of the Pocket only. This will create a divide, thus two Pocket segments.

43. Repeat Steps 40-41 for the remaining Pockets and Lining Main Panel.

44. Place both Lining Main Panels right sides together. Sew along the sides and bottom using a 1/4" seam allowance, making sure to leave a 6" opening along the bottom edge.

Finish the Bag



45. Place the lining over the exterior so that they are right sides together. Make sure that the Flap and Strap Extenders are tucked safely inside. Align the side seams, then pin in place. Sew along the entire top edge of the bag using a 1/4" seam allowance.

46. Turn the bag right side out through the hole in the lining. Press. Topstitch or slipstitch the hold in the lining closed.
47. Topstitch around the entire top opening that you sewed in Step 45, using a 1/4" seam allowance.
48. Clip the Strap onto the bag. See how the length feels to you. If too long, unpick the stitches on one end of the swivel clip only, trim to preferred length, then re-sew.

Congratulations, you've finished!

Need help?? E-mail me any time at sara@sewsweetness.com

Please add your finished bag to my Flickr group! <http://www.flickr.com/groups/sewsweetness>

Instagram hashtag #brookfieldbag

Copyright ©Sew Sweetness 2014

<http://www.sewsweetness.com>

Please check out my site for free tutorials on bags and bag-making techniques!

Sewn items made from Sew Sweetness sewing patterns may be sold by the home sewist at craft fairs and on-line.

Sew Sweetness Brookfield Bag

Main Panel Pattern Piece

Cut 2 exterior fabric

Cut 2 lining fabric

Cut 2 Soft and Stable

Cut 2 Shape Flex

Cut on the fold

Dart

A diagram of a pattern piece, likely for a bag, showing a large rectangular shape with a rounded bottom-left corner. A small triangular section is marked with a line and the word "Dart", indicating where to fold the fabric to create a dart.

Sew Sweetness Brookfield Bag

Pocket Pattern Piece
Cut 4 lining fabric

Cut on the fold

Sew Sweetness Brookfield Bag

Top Panel Pattern Piece
Cut 2 solid fabric
Cut 2 Shape Flex

Cut on the fold

Sew Sweetness
Brookfield Bag

Corner Accent
Cut 2 on right side of solid fabric/Shape Flex
Cut 2 on wrong side of solid fabric/Shape Flex

Sew Sweetness Brookfield Bag

Flap Pattern Piece
Cut 2 exterior fabric
Cut 1 Soft and Stable
Cut 1 Shape Flex

1" square